

# Chess Kindergarten Pack



Thank you for downloading the **Chess** Kindergarten pack from RoyalBaloo.com! I hope you and your little ones enjoy the printables! Please note the terms of use:

These printables are provided free of charge and are for personal use only.

You may:

Print as many copies as you'd like

Use them in a group or classroom setting

Share the link to one of our blogs to other people who are interested in the program

You may not:

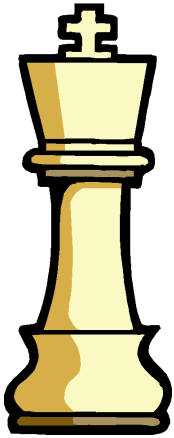
Sell or distribute this file

Host this file on your own website

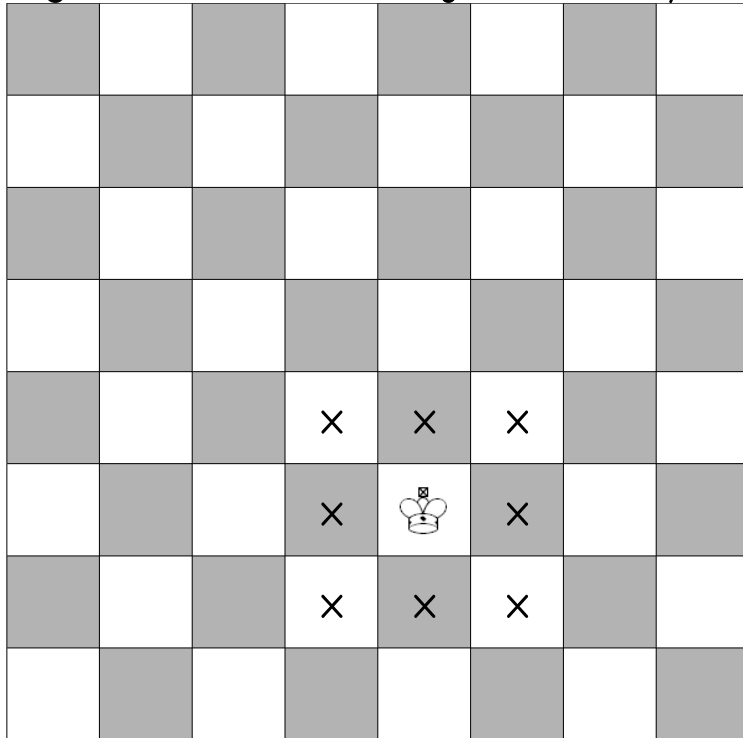
Upload this file to a shared website (i.e. 4shared.com)



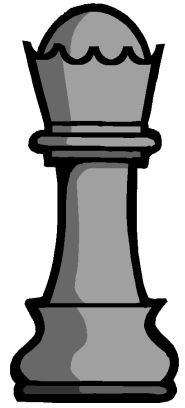
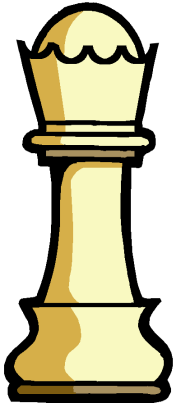
# The King



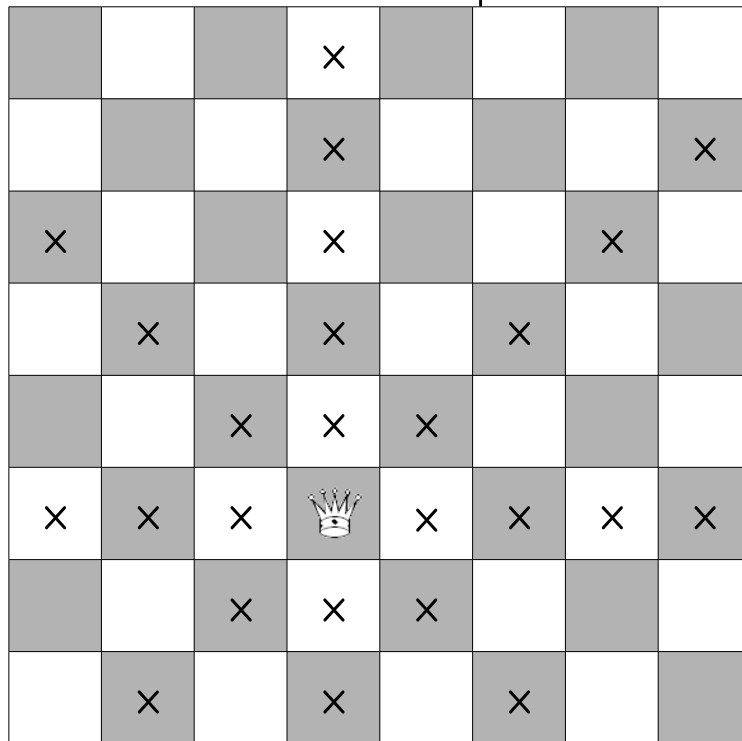
The king can move one square in any direction.



# The Queen



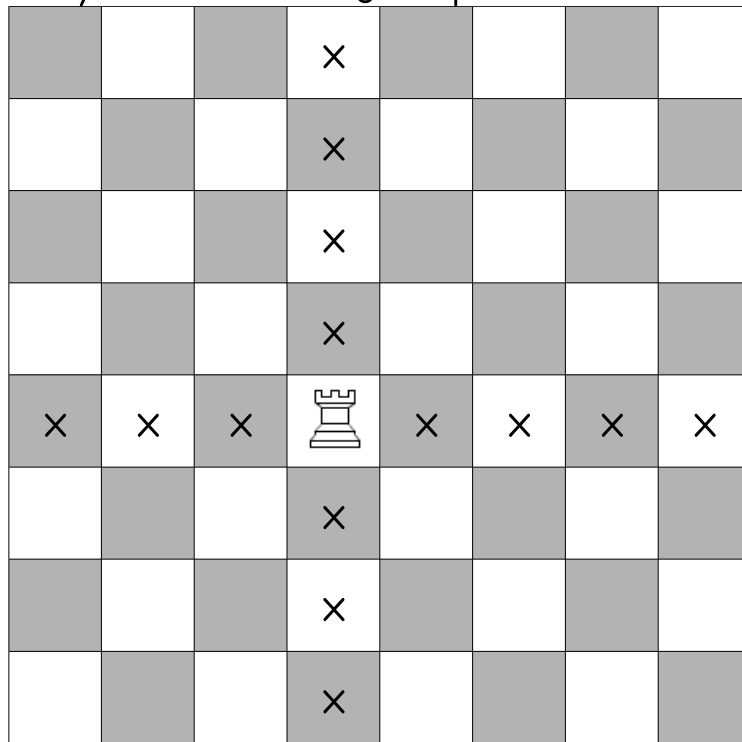
The Queen can move any number of squares in any direction (horizontal, vertical, and diagonal) but cannot jump over another piece..



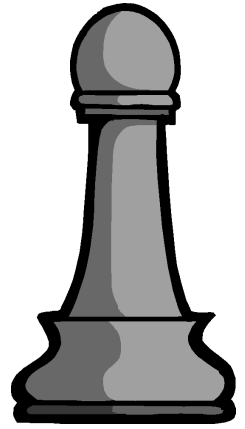
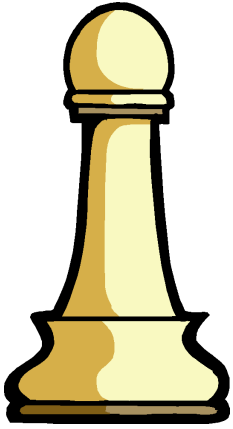
# The Rook



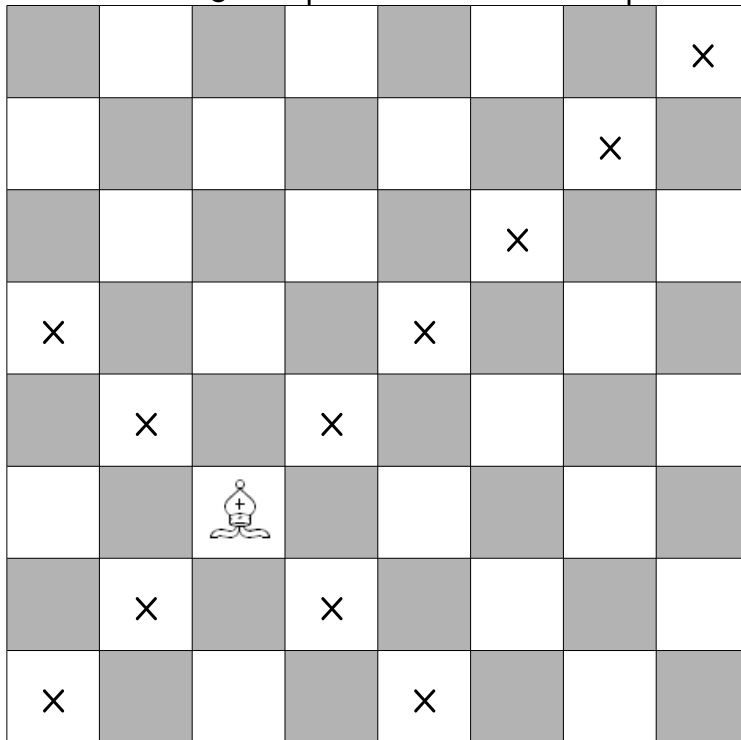
The Rook can move any number of squares horizontally or vertically but cannot jump over another piece.



# The Bishop



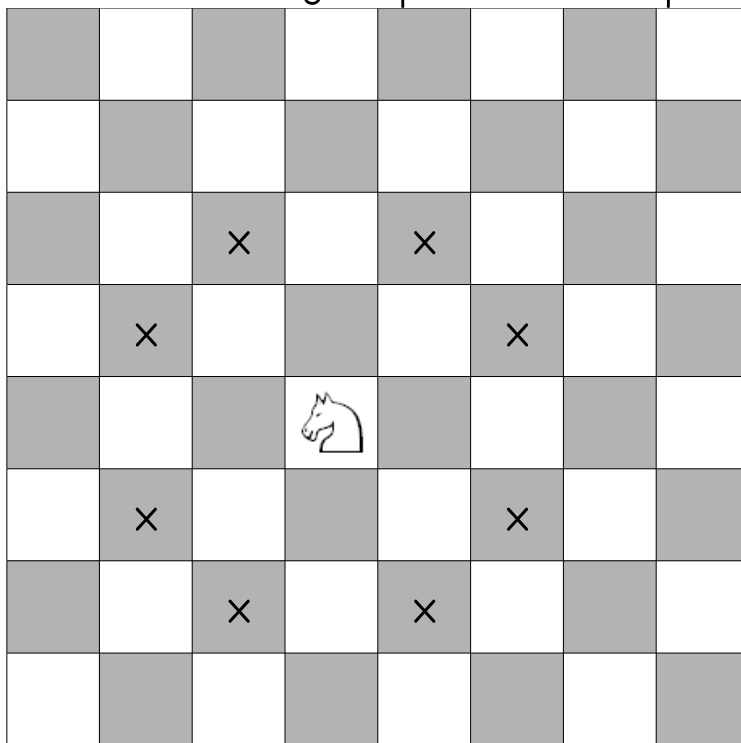
The Bishop can move any number of squares diagonally but cannot jump over another piece.



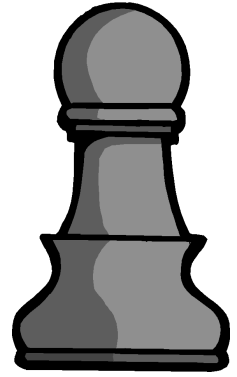
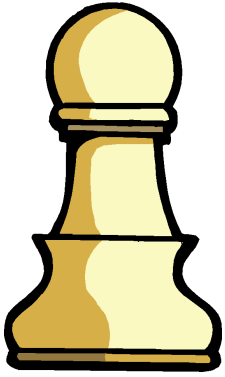
# The Knight



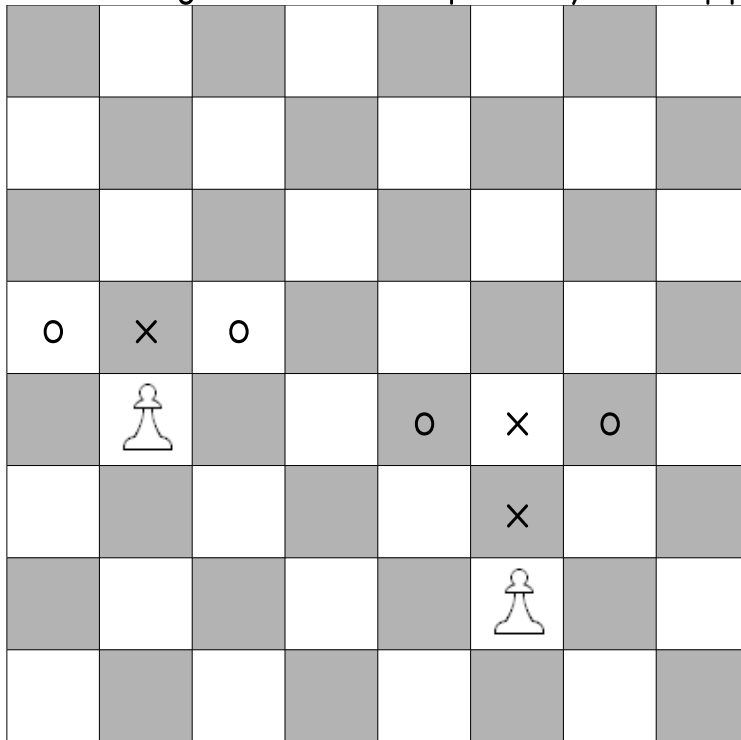
The Knight moves in an L formation. It moves 2 squares in one direction and 1 square in another direction. It is the only piece that can jump over other pieces.

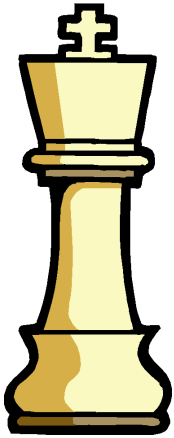


# The Pawn



The Pawn can move one square vertically, or two squares vertically on it's first turn. It may move one square diagonally if that square is occupied by an opponents piece.





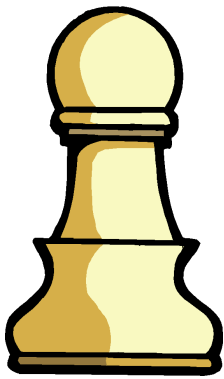
white king



white queen



white knight



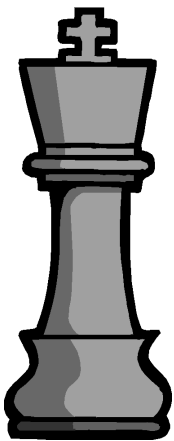
white pawn



white rook



white bishop



black king

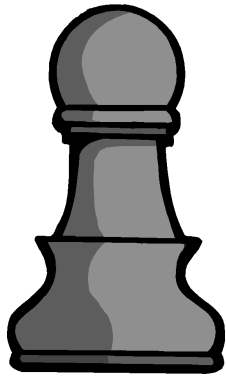


black queen

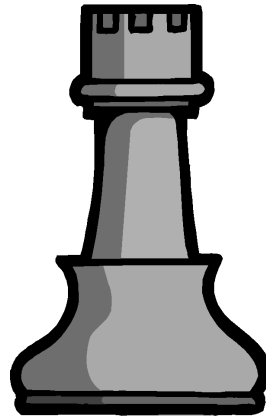


black knight

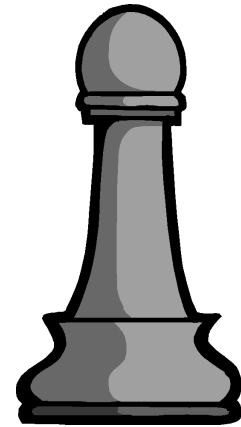




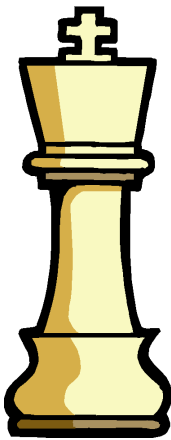
black pawn



black rook



black bishop



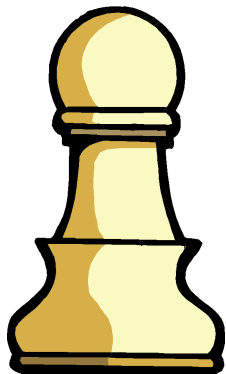
white king



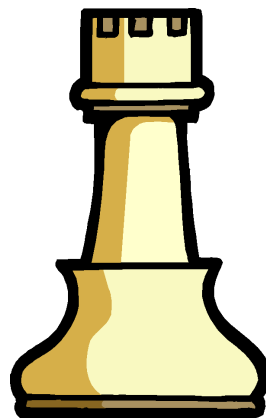
white queen



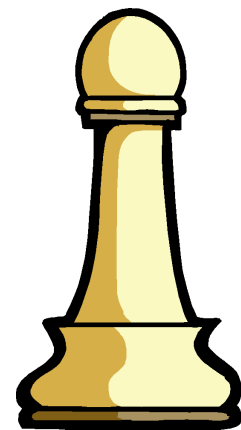
white knight



white pawn



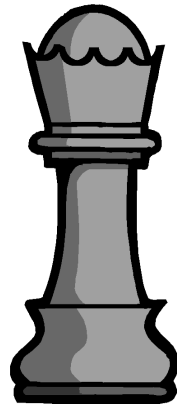
white rook



white bishop



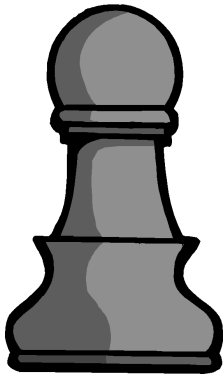
black king



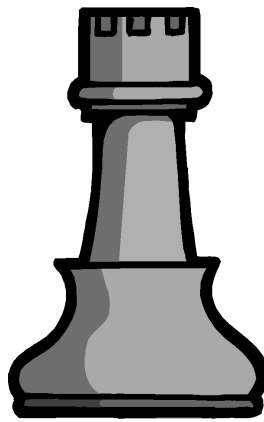
black queen



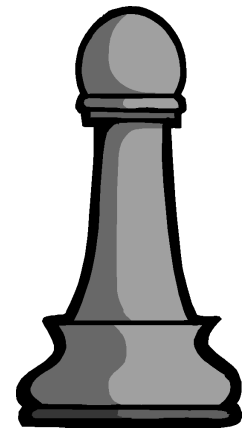
black knight



black pawn

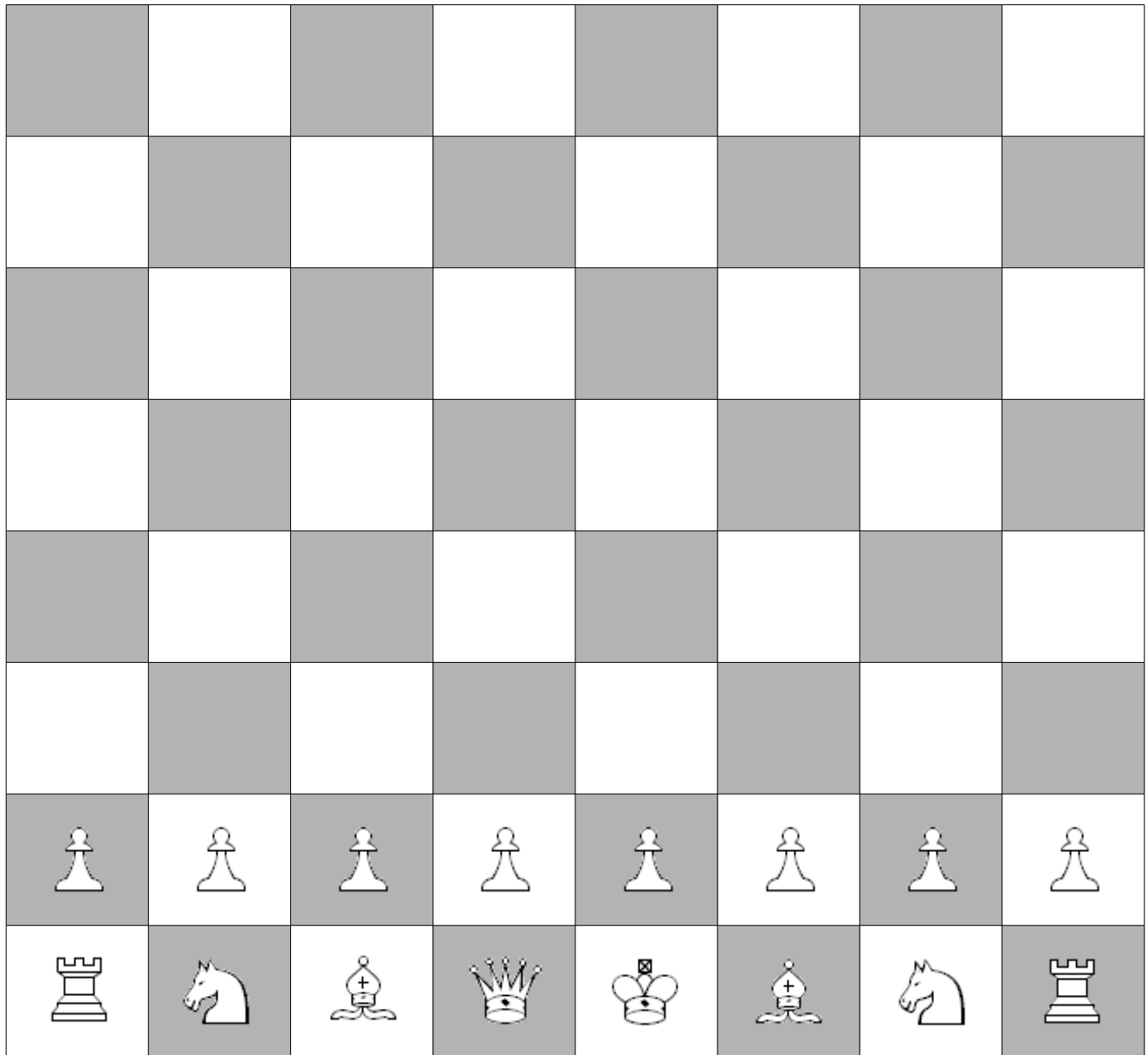


black rook

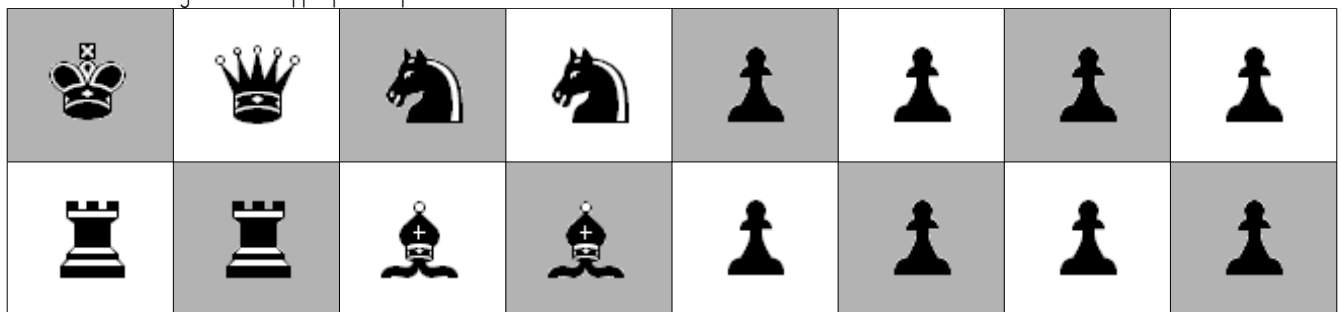


black bishop

# Set Up The Opposite Side

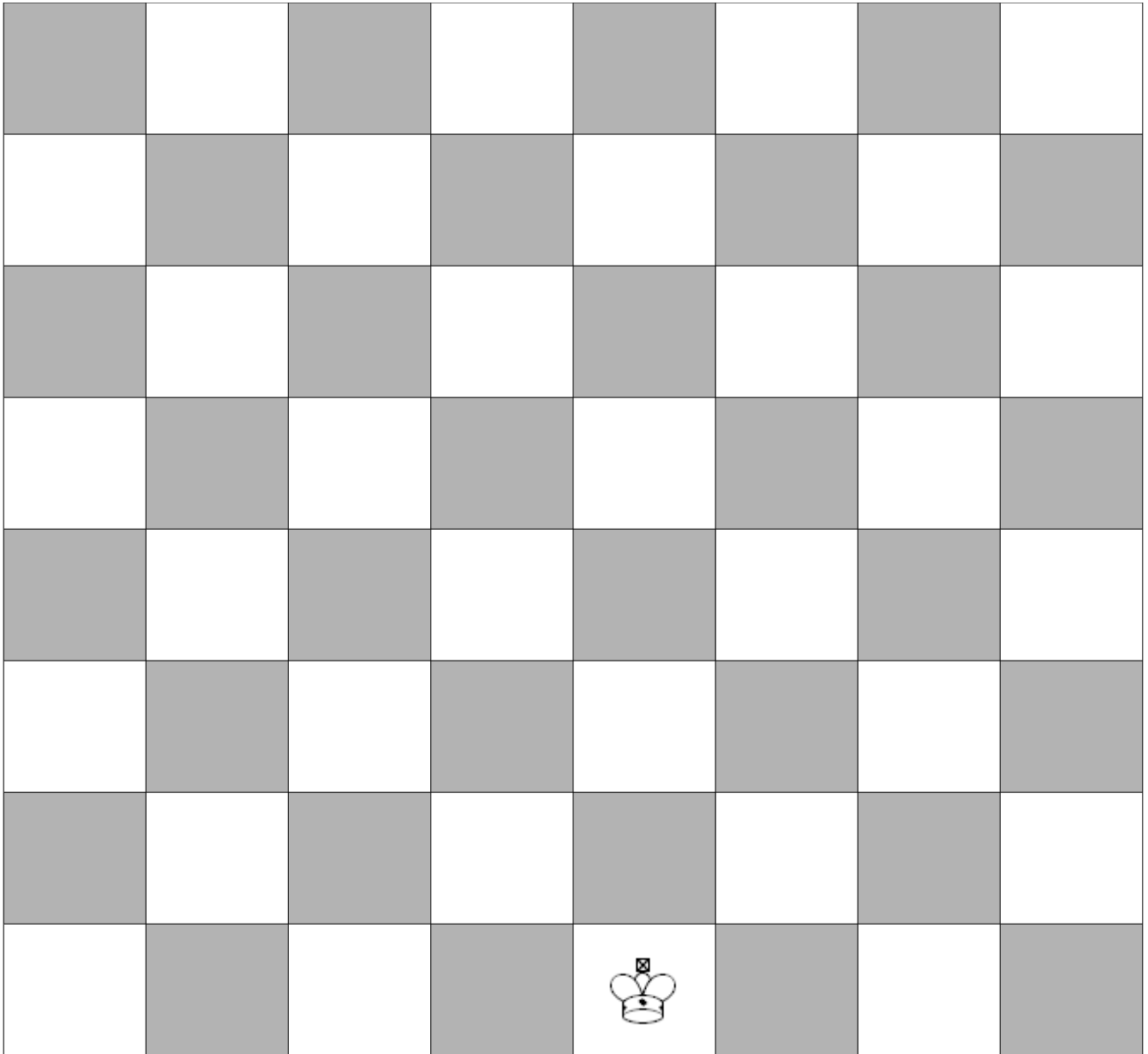


Cut these out and glue in the appropriate spot



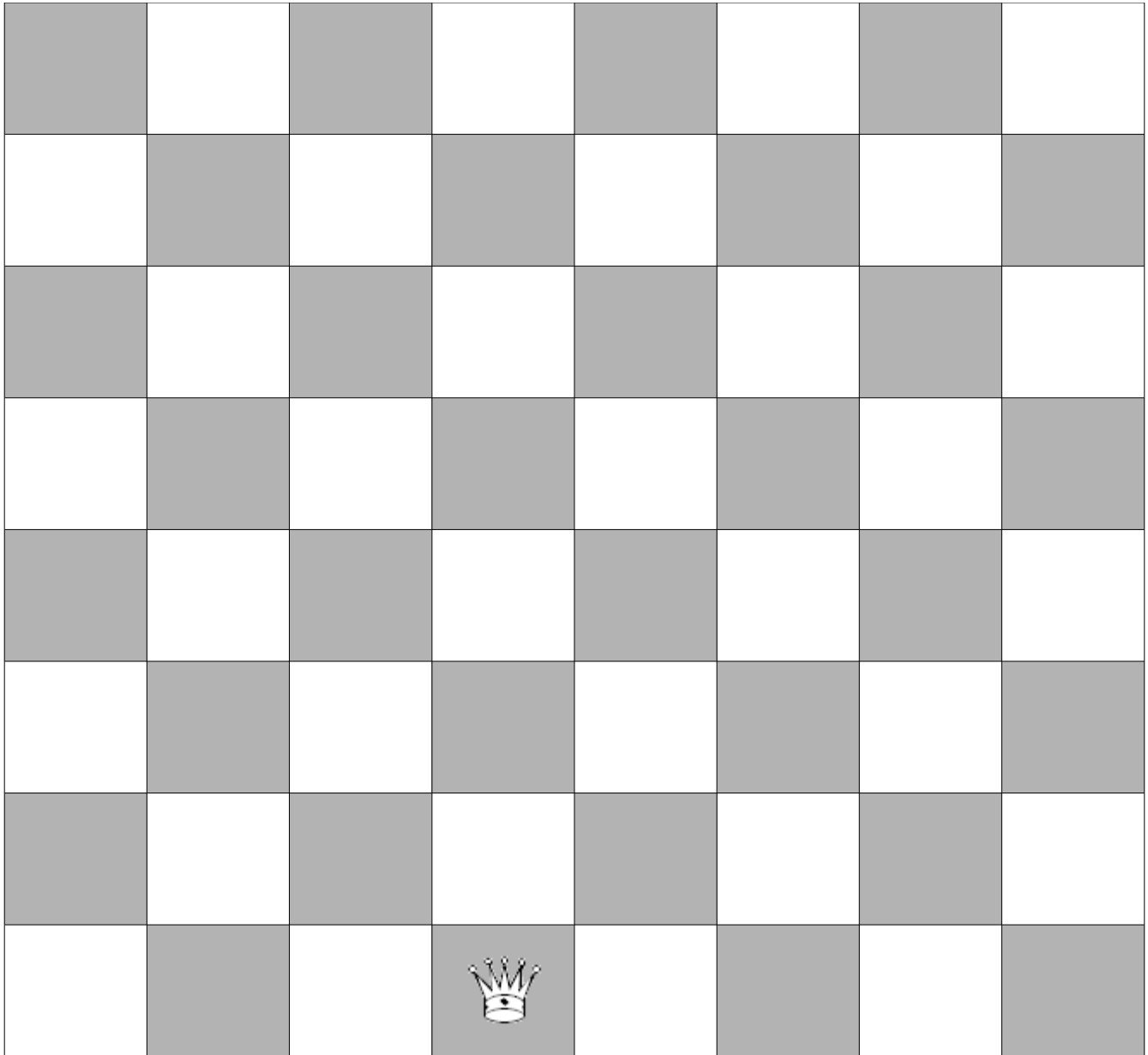
# King

Color all the squares where the king can move in RED



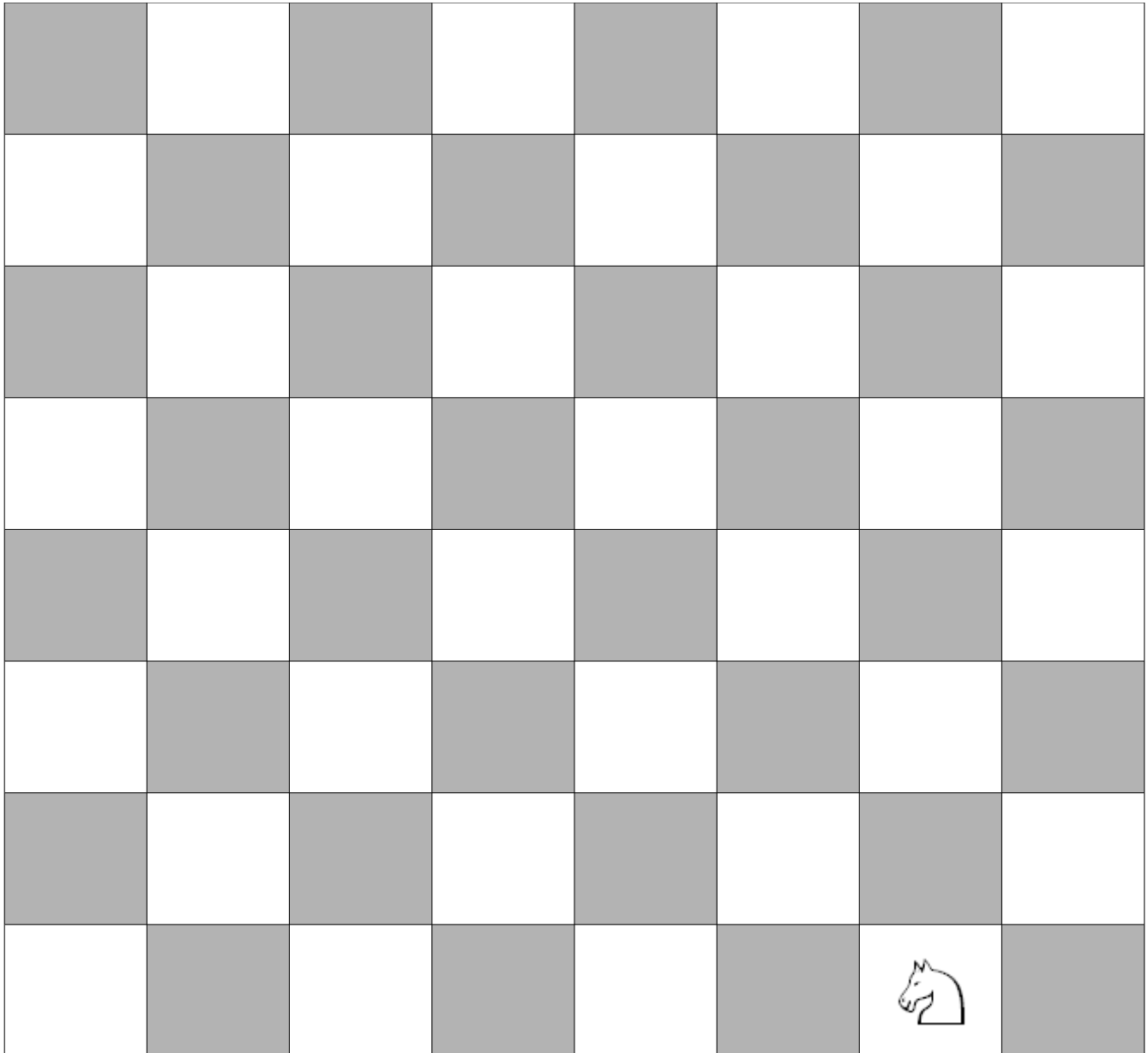
# Queen

Color all the squares where the queen can move in PURPLE.



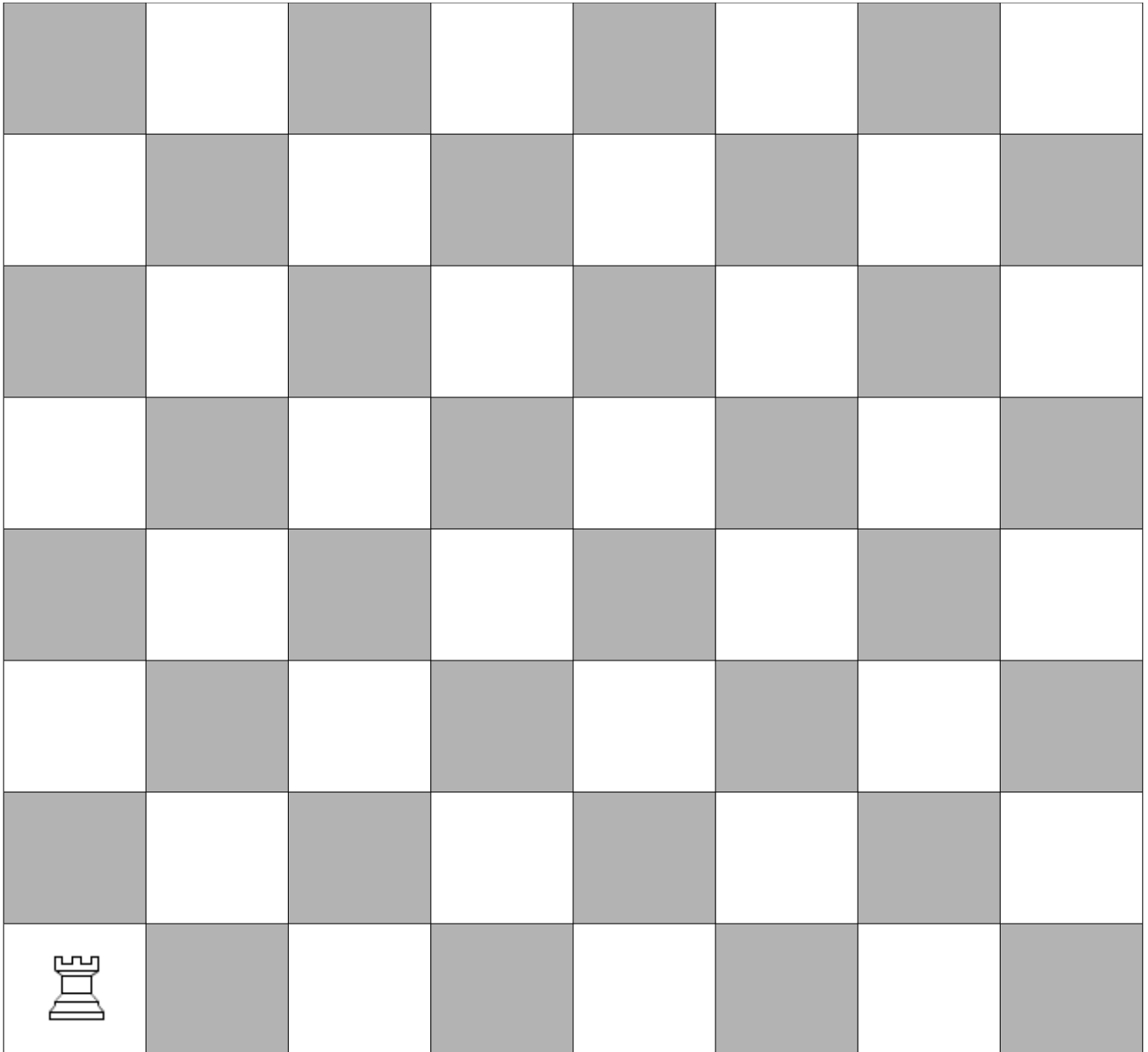
# Knight

Color all the squares where the knight can move in GREEN



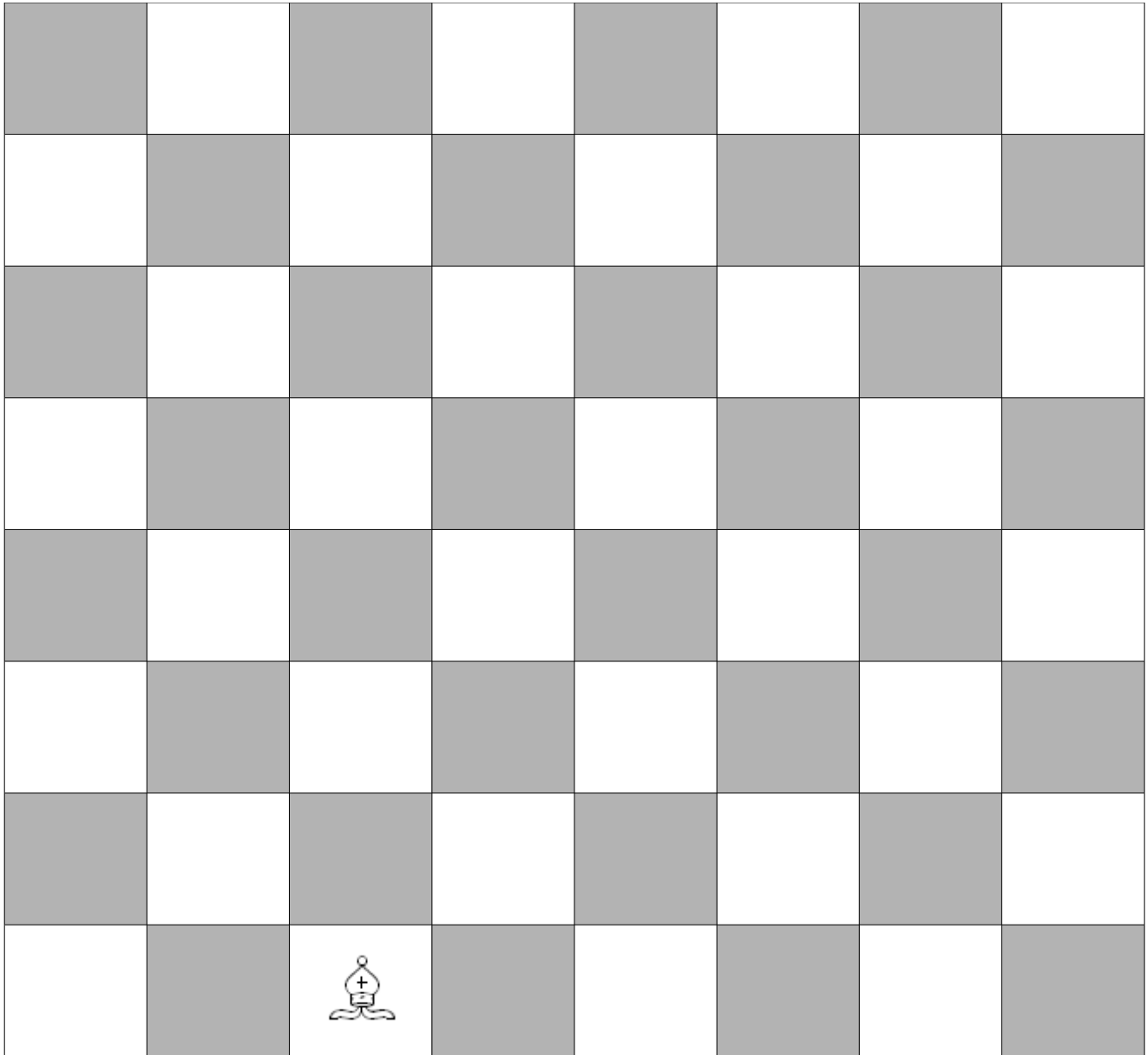
# Rook

Color all the squares where the rook can move in BLUE



# Bishop

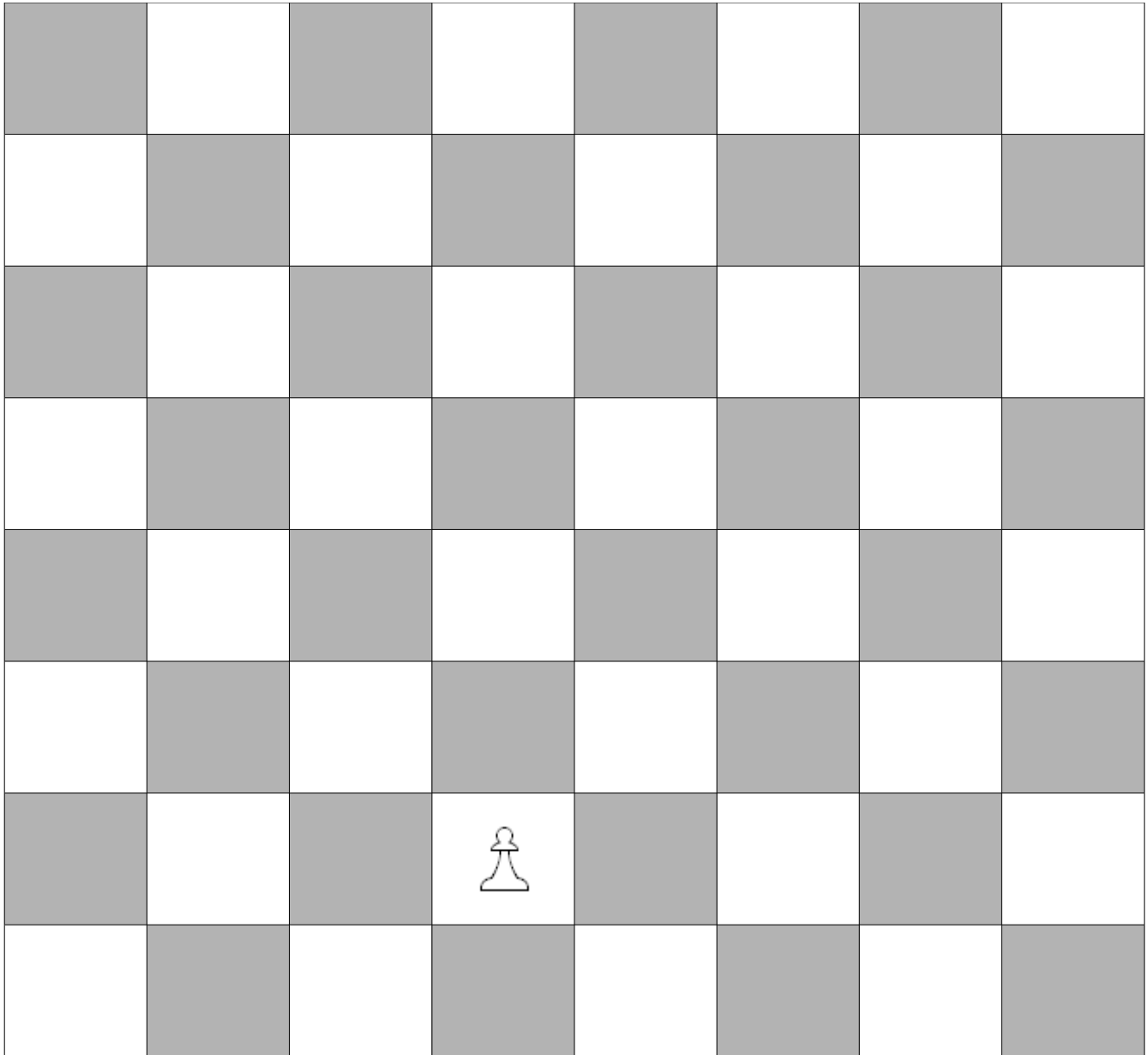
Color all the squares where the bishop can move in **ORANGE**



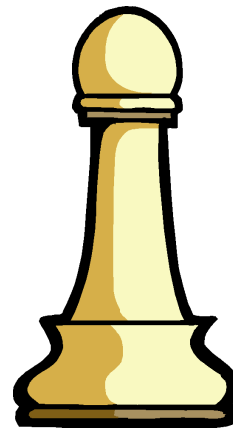
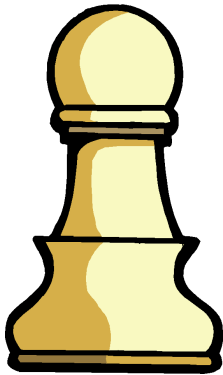
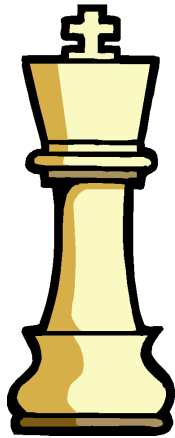


# Pawn

Color all the squares where the pawn can move in **YELLOW**



























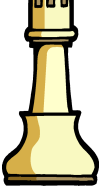








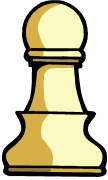


# Match the Name



King	Rook
Queen	Pawn
Bishop	King

# Chessmen Patterning

					
---	---	---	---	---	---



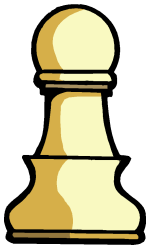
I am the King



I am the Queen



I am a Knight



I am a Pawn



I am a Rook



I am a Bishop



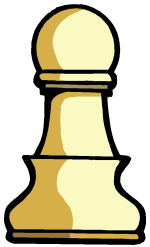
King



Queen



Knight



Pawn



Rook



Bishop



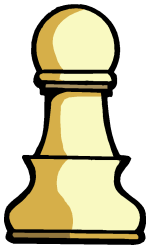
King



Queen



Knight



Pawn



Rook



Bishop



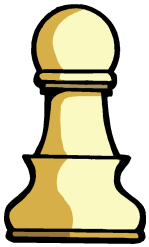
Handwriting practice lines consisting of a solid top line, a dashed middle line, and a solid bottom line.



Handwriting practice lines consisting of a solid top line, a dashed middle line, and a solid bottom line.



Handwriting practice lines consisting of a solid top line, a dashed middle line, and a solid bottom line.



Handwriting practice lines consisting of a solid top line, a dashed middle line, and a solid bottom line.

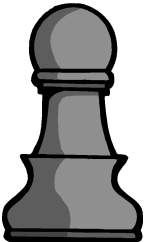
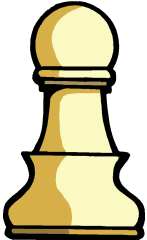


Handwriting practice lines consisting of a solid top line, a dashed middle line, and a solid bottom line.



Handwriting practice lines consisting of a solid top line, a dashed middle line, and a solid bottom line.

Match the Black and White Pieces





# Find the Same

